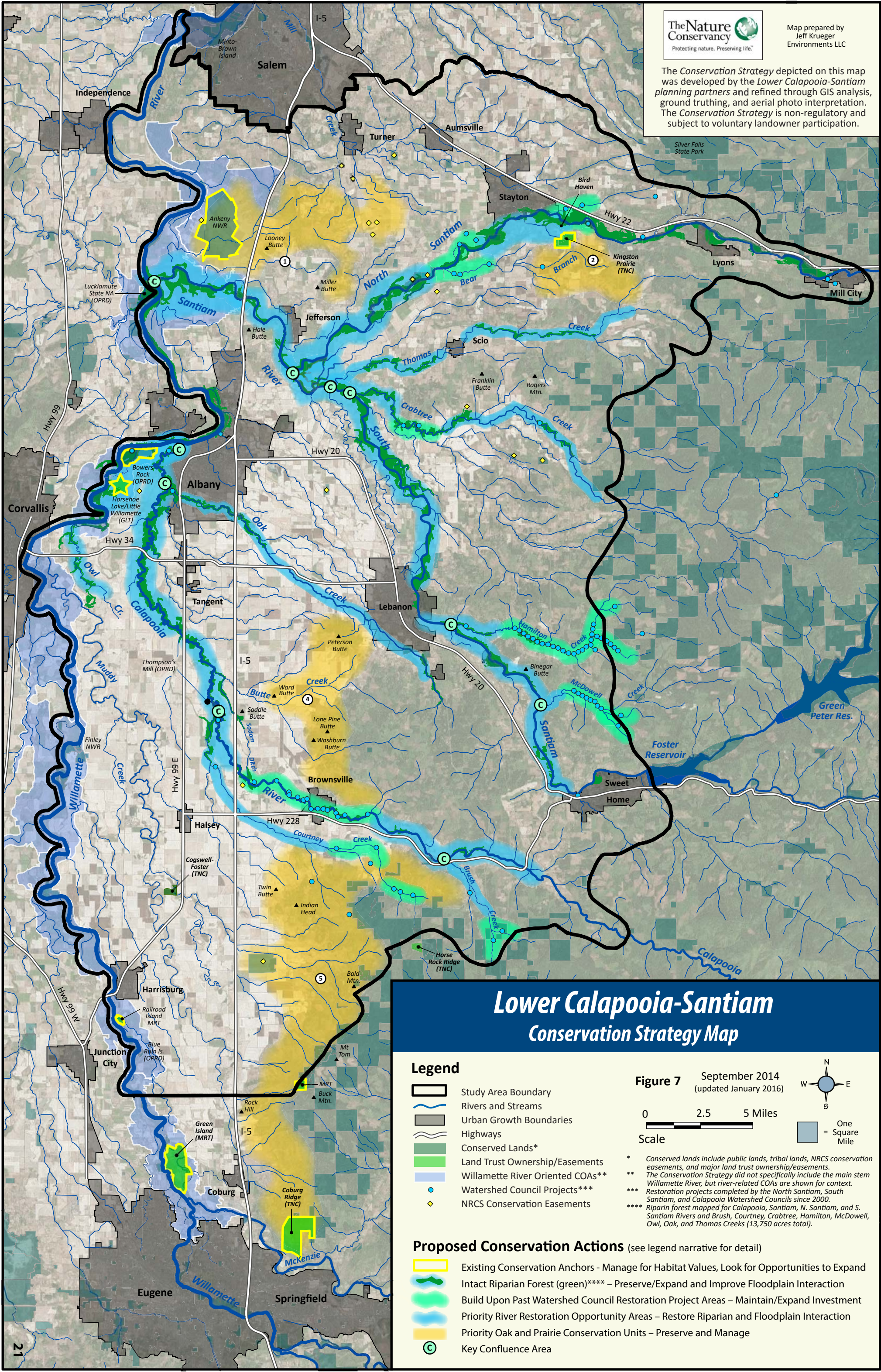


The Conservation Strategy depicted on this map was developed by the Lower Calapooia-Santiam planning partners and refined through GIS analysis, ground truthing, and aerial photo interpretation. The Conservation Strategy is non-regulatory and subject to voluntary landowner participation.



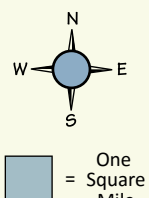
Lower Calapooia-Santiam Conservation Strategy Map

Legend

- Study Area Boundary
- Rivers and Streams
- Urban Growth Boundaries
- Highways
- Conserved Lands*
- Land Trust Ownership/Easements
- Willamette River Oriented COAs**
- Watershed Council Projects***
- NRCS Conservation Easements

Figure 7 September 2014 (updated January 2016)

0 2.5 5 Miles
Scale



* Conserved lands include public lands, tribal lands, NRCS conservation easements, and major land trust ownership/easements.
 ** The Conservation Strategy did not specifically include the main stem Willamette River, but river-related COAs are shown for context.
 *** Restoration projects completed by the North Santiam, South Santiam, and Calapooia Watershed Councils since 2000.
 **** Riparian forest mapped for Calapooia, Santiam, N. Santiam, and S. Santiam Rivers and Brush, Courtney, Crabtree, Hamilton, McDowell, Owl, Oak, and Thomas Creeks (13,750 acres total).

Proposed Conservation Actions (see legend narrative for detail)

- Existing Conservation Anchors - Manage for Habitat Values, Look for Opportunities to Expand
- Intact Riparian Forest (green)**** - Preserve/Expand and Improve Floodplain Interaction
- Build Upon Past Watershed Council Restoration Project Areas - Maintain/Expand Investment
- Priority River Restoration Opportunity Areas - Restore Riparian and Floodplain Interaction
- Priority Oak and Prairie Conservation Units - Preserve and Manage
- Key Confluence Area